

**mindray**

# TE5

Ultrasound System



# Professional Design for Clinical Focus

The TE5 ultrasound system is a specialty system with a unique design, where every detail has been taken into consideration to meet the needs of today's demanding ultrasound environments. With enhanced image quality and an intuitive touch enabled design, the TE5 system is an excellent choice for use across a wide range of clinical applications.

## Technologies within Reach

### eSpacial Navi™

4D magnetic needle navigation technology delivers enhanced needle visualization and location during in-plane or out-of-plane procedures. With eSpacial Navi, the needle tip and trajectory are visualized, allowing for improved physician confidence and patient safety during interventional procedures.

\* Compatible with L11-3VNs transducer

### iNeedle+™

Second generation iNeedle+ technology automatically detects needle angle and improves visibility on both linear and convex transducers during interventional procedures.

### iVocal Voice Control

Based on artificial intelligence voice recognition technology, second generation iVocal allows for a hands-free scanning experience, ideal for sterile environments.

### Wide Range of Transducers

The TE5 system offers a comprehensive portfolio of transducers for both superficial and deep tissue imaging ranging from 1 MHz to a 20 MHz ultra-high frequency transducer. In addition, the new L12-3RCs linear transducer with three programmable buttons is an excellent solution for MSK and venous access applications.

### Dual Comparison

Dual comparison provides visualization of two real-time images (or a real-time image with a stored image), side-by-side and in wide-screen format. This feature is ideal for MSK applications.



# Smart Design with Innovative Ergonomics

With a slim profile and small footprint cart, the TE5 system is easy to transport from room to room for effortless scanning at the patient's bedside. In addition, flexible mounting options for the wall or tabletop are available.

With the importance of infection control, the TE5 system's seamless touch screen and auto lock feature prevents residue buildup and makes it easy to clean and disinfect even during exams.

15" touch screen with anti-glare and wide viewing angle

Elevated transducer holders for cord longevity and ideal cable management



Built-in battery provides long battery life



Wi-Fi enabled



Height adjustable



## High Definition (HD) Touch Screen

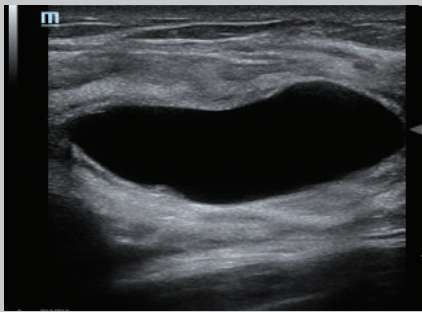
State-of-the-art fingertip operation, even with gel-covered gloves, provides simple control and setting optimization at the swipe of a finger.

## Gesture-Based Workflow

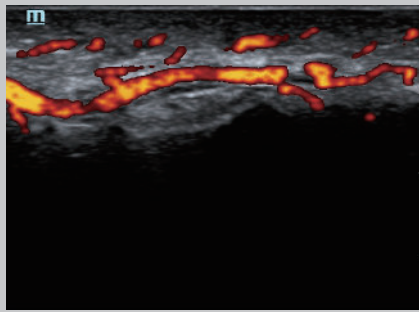
Gesture controls are the most efficient way to satisfy all clinical functions, and also allow flexibility of user-programming.

## Powerful Data Management

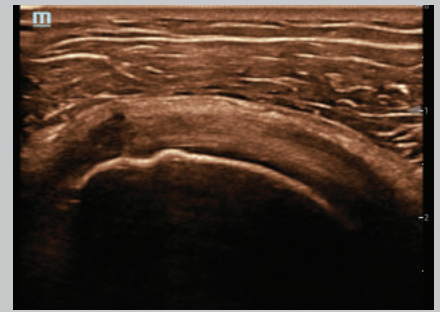
The TE5 system can support complete patient data management on-board. With a 120 GB solid state hard drive and up to 8 minutes of prospective storage, the TE5 system supports full exam recording and image archiving and review.



Breast cyst



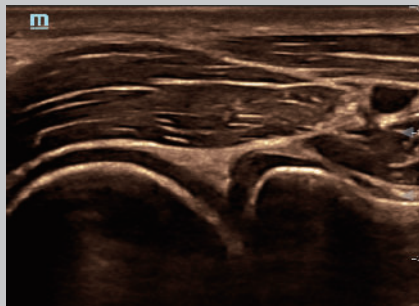
Superficial (fingertip) vascular flow



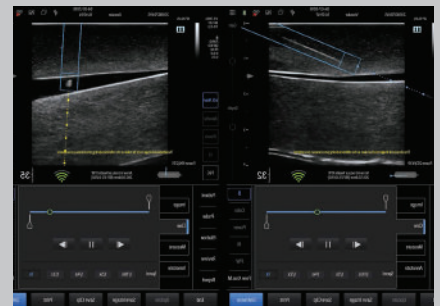
Subscapular muscle tendon



Vein ablation with needle cross section



Humerus



In-plane vs. out-of-plane procedures

## Mindray North America Innovation Center

2100 Gold Street  
San Jose, CA 95002

Tel: 800.288.2121 Support: 877.913.9663 [www.mindray.com](http://www.mindray.com)

©2018 Mindray DS USA, Inc. Subject to change. Mindray® is a registered trademark of Shenzhen Mindray Bio-Medical Electronics Co. Ltd. 02/19 P/N: 0002-08-40387 Rev A

**mindray**  
healthcare within reach